

ACCES

EUROPE



SPARE PARTS CATALOG FOR AIR CONVEYORS

EDITION 2016



ACCS Europe is an engineering company specializing in the transfer by air of empty PET bottles. Based in the North of France since 2008, ACCS counts among its teams, experienced employees in several technical areas such as 3D design, aerodynamics, automation and mechanics.

Our experience has shown us the difficulties of our customers to maintain the highest level of performance with their line of air conveyors. That is why we designed this spare parts catalog to facilitate research of articles and respond quickly to the demand of spare parts.

You will find in this catalog, in addition to standard items, novelties like the neck guide PLUS made of a high slippery material, which improves the efficiency of the line, or UBIC multi-position side guide that will get you up to 30 positions settings with the same hardware.

Alongside this catalog you can find all the ACCS articles on our website and download (after registration) the quotation request sheet.

In addition, all registered customers can find on custom pages, the overall lay-out and the section views in DWG, technical files, the latest versions of programs and control display.

We wish you a good use of this catalog and we thank you in advance for your confidence.

Francis Antson and Raphael Chiomento.
Founders and co-managers ACCS EUROPE.



• CONTACTS



ACCS EUROPE
23 ZAC DE L'EUROPE
59310 ORCHIES - FRANCE



+33(0)9.72.50.75.82



contact@accseurope.com



www.accseurope.com



+33(0)3.20.52.94.43



ONLINE REGISTRATION :
www.accseurope.com



VIDEOS :
ACCSGROUP



SERVICES & TRAINING :
+33(0)9.81.69.94.43



EXPRESS DELIVERY



• TABLE OF CONTENTS

CONTACTS..... 3

TABLE OF CONTENTS..... 4

UNDER NECK GUIDES 5

1. PRINCIPLE OF FIXING5

2. CLAMPS5

3. UNDER NECK GUIDES.....6

4. RAILS.....6

5. TOOLING7

LATERAL GUIDING 8

1. MULTI-POSITION LATERAL GUIDE : UBIC X-Y.....8

2. MULTI-POSITION LATERAL GUIDE : UBIC10

3. 2 POSITIONS LATERAL GUIDE : CLASSIC12

4. ACCESSORIES FOR LATERAL GUIDE.....13

DUMP GATES14

1. DUMP GATES14

2. DETAILED DRAWING.....14

3. COMPLETE SET15

4. DETAIL OF PARTS.....15

SLUG SYSTEM.....16

1. SLUG SYSTEM SET16

2. COMPLETE SET16

3. DETAILED DRAWING.....16

4. DETAIL OF PARTS.....17

VENTILATION AND FILTRATION18

1. BLOWER ASSEMBLY AND G4 FILTER18

2. DETAILS PLAN.....18

3. DETAIL OF PARTS.....19

4. BLOWER ASSEMBLY AND G4 + F7 FILTER20

5. DETAILS PLAN.....20

6. DETAIL OF PARTS.....21

7. BLOWER ASSEMBLY AND G4 + F7 + H14 FILTER22

8. DETAILS PLAN.....22

9. DETAIL OF PARTS.....23

PNEUMATICS AND ELECTRICITIES24

1. VARIOUS PNEUMATIC ACCESSORIES24

2. DETAIL OF PNEUMATIC ACCESSORIES24

3. VARIOUS ELECTRIC ACCESSORIES25

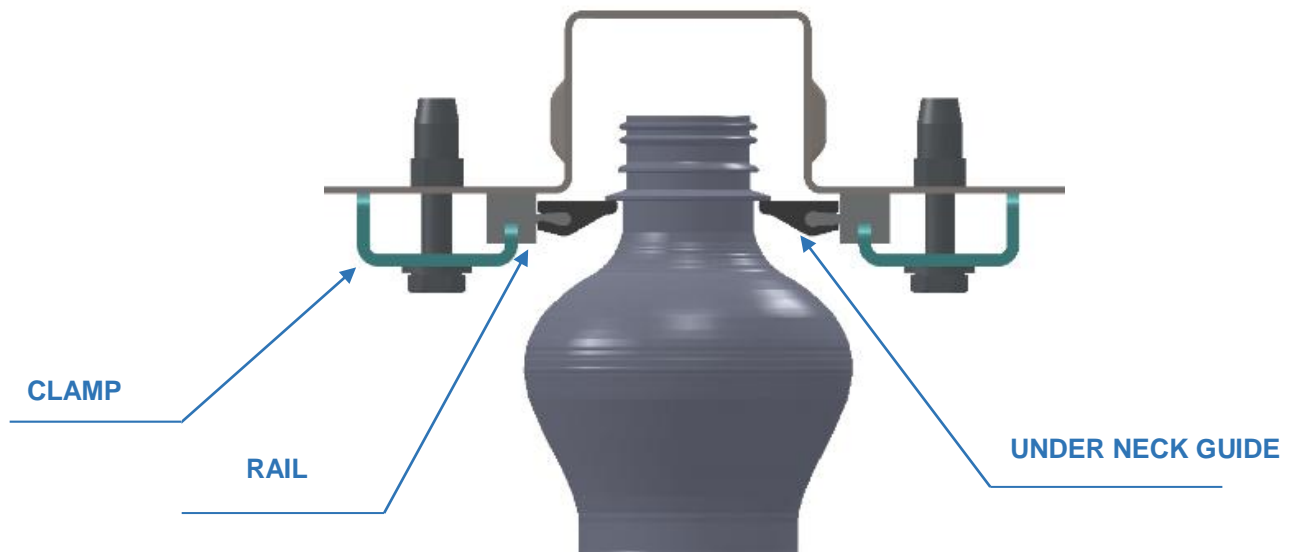
4. DETAIL OF ELECTRIC ACCESSORIES26



• UNDER NECK GUIDES

1. PRINCIPLE OF FIXING

ACCS provides under neck guides to clip on an aluminum rails. There are several forms of guides and rails can be adapted to different types of air conveyors. ACCS advises to change 100% of the neck guide every year, in order to keep the setting in place.



2. CLAMPS

Description	Ref.
LONG CLAMP L500	TOLE000092
LONG CLAMP L1000	TOLE000093
LONG CLAMP L1500	TOLE000094
LONG CLAMP L2000	TOLE000095
LONG CLAMP L2500	TOLE000096
SHORT CLAMP	TOLE000024
LARGE CLAMP	TOLE000145

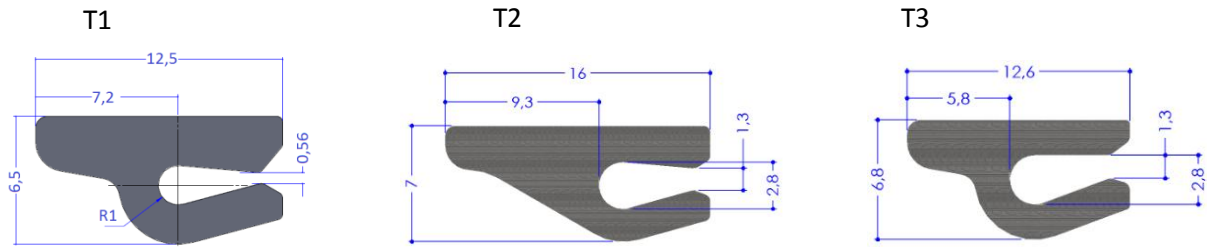


EX: SHORT CLAMPS



• UNDER NECK GUIDES

3. UNDER NECK GUIDES



Description	Réf.
UNDER NECK GUIDE T1	PLAS000010
UNDER NECK GUIDE T1+	PLAS000026
UNDER NECK GUIDE T2	PLAS000002
UNDER NECK GUIDE T2+	PLAS000025
UNDER NECK GUIDE T3	PLAS000009
UNDER NECK GUIDE T3+	PLAS000027

NEW: ACCS PLUS is a polypropylene neck guide with high performance of sliding. This new material improves the bottle transfer and reduces the energy consumption drastically.

4. RAILS

REF: ALUM000001



REF: PLAS000011



REF: ALUM000002



• 4a- Rails for straight parts :

Description	Ref.
ALU RAIL 1R LG 3000	ALUM000001
PLASTIC RAIL 2R LG 2500	PLAS000011
ALU RAIL 3R LG 3000	ALUM000002



• UNDER NECK GUIDES

• 4b- Rails for curve parts :

Angles	Radius	Ref. 1R/3R Inside	Ref. 1R/3R Outside
30°	1000	000140/000150	000141/000151
45°	1000	000142/000152	000143/000153
60°	1000	000144/000154	000145/000155
90°	1000	000146/000156	000147/000157
MADE TO MEASURE	1000	000148/000158	000149/000159

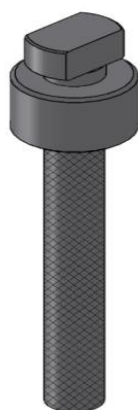
Angles	Radius	Ref. 3R Inside	Ref. 3R Outside
45°	750	000162	000163
90°	750/1100	000160/000164	000161/000165

NB : For further bending, please contact us specifying the radius and angle.

5. TOOLING

ACCS Europe offers 3 types of tools for setting, controlling and cutting the under neck guide (see our video on YouTube). The clipping tool DIVE000048 simplifies the neck guide installation.

REF : DIVE000048



REF : DIVE000049



REF : DIVE000050



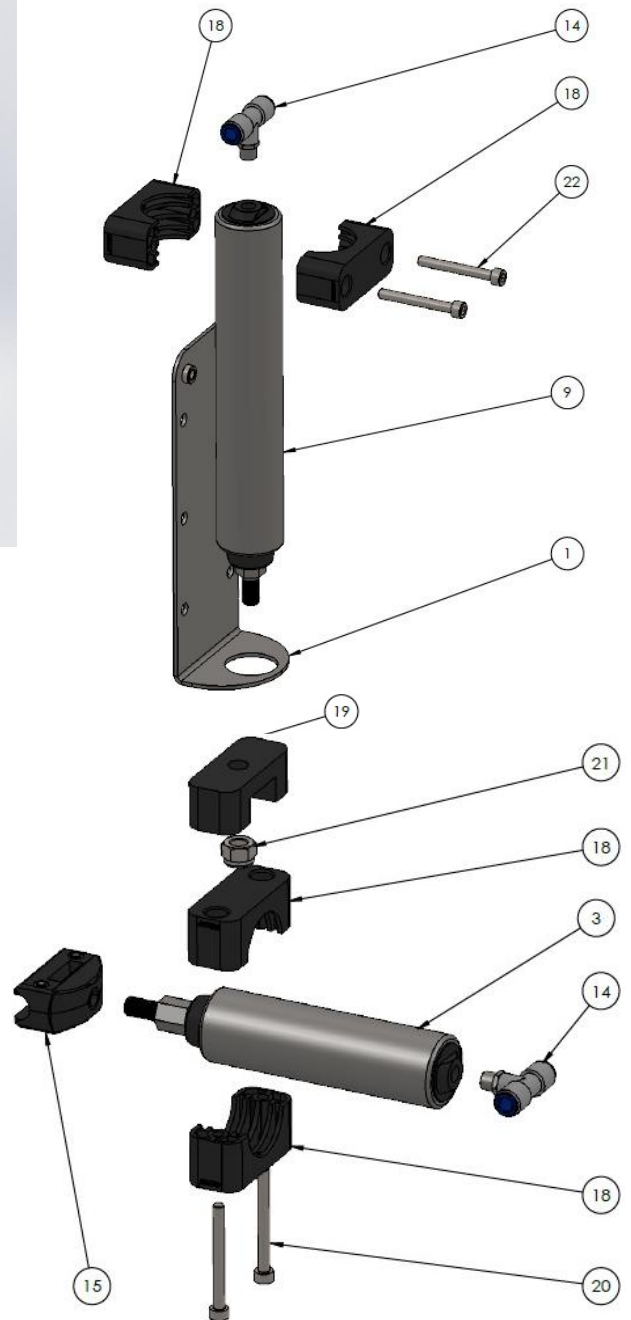
Description	Ref.
CLIPPING TOOL	DIVE000048
CONTROL TOOL	DIVE000049
UNDER NECK CUTTING PLIER	DIVE000050



• LATERAL GUIDING

1. MULTI-POSITION LATERAL GUIDE : UBIC X-Y

ACCS Europe offers, in addition to its UBIC range, a new generation of adjustable lateral guides in the 2 X-Y axes. Capable of supporting all bottle sizes, this product can be installed on different types of air conveyors. Contact us for more information.



• 1a- Complete set for straight and curve sections :

Ref.	Description
000264	X-Y UBIC STRAIGHT LATERAL GUIDE SET
000265	X-Y UBIC CURVE LATERAL GUIDE SET



• LATERAL GUIDING

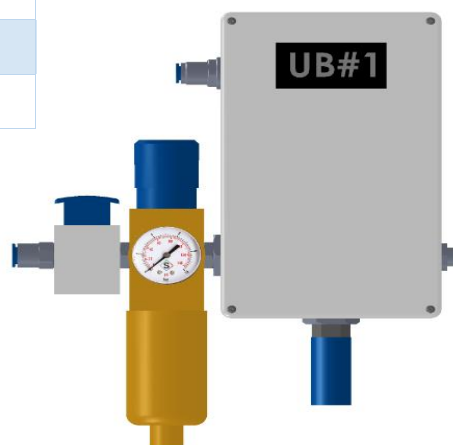
• 1b- Detailed parts :

No. article	Qty	Ref.	Description
1	1	TOLE000181	X-Y UBIC SUPPORT ACCS
2	1	DIVE000008	FIX NUT Ø14
3	1	DIVE000053	CONNECTING WEB
4	2	DIVE000019	NECKLACE Ø40 PA
5	1	PNEU000071	UBIC CYLINDER Ø35-52 M8
6	1	PNEU000077	UBIC CYLINDER Ø35-115 M10
7	2	PNEU000022	T FITTING G1-8 Ø8
8	2	BOUL000114	CHC SCREW M6x50
9	2	BOUL000115	CHC SCREW M6x60
10	1	BOUL000058	TORQUE NUT M10
11	1	TOLE000181	X-Y UBIC SUPPORT ACCS

• 1c- Complete set of driving unit for X-Y UBIC guide : UBIC BOX.

Description	Ref.
UBIC BOX (SMC)	000107
UBIC BOX (METALWORK)	000108

REF: 000107 / 000108

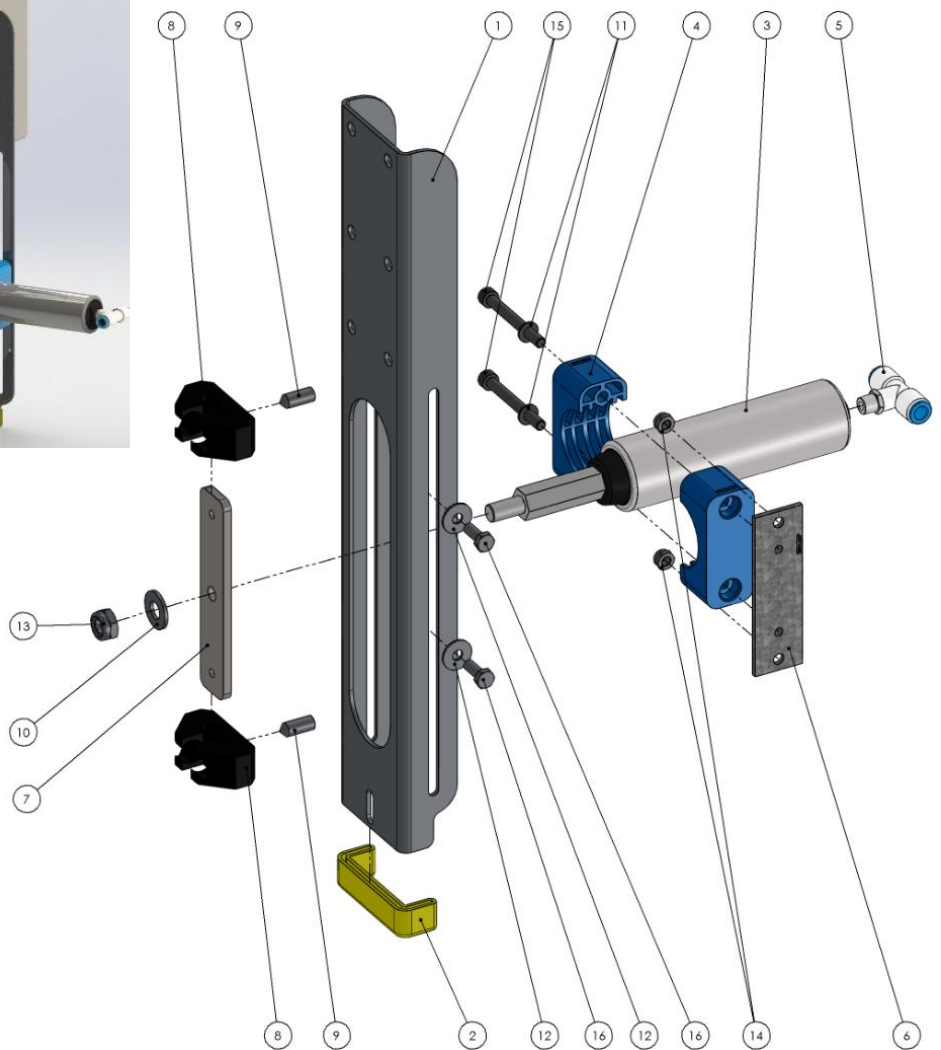
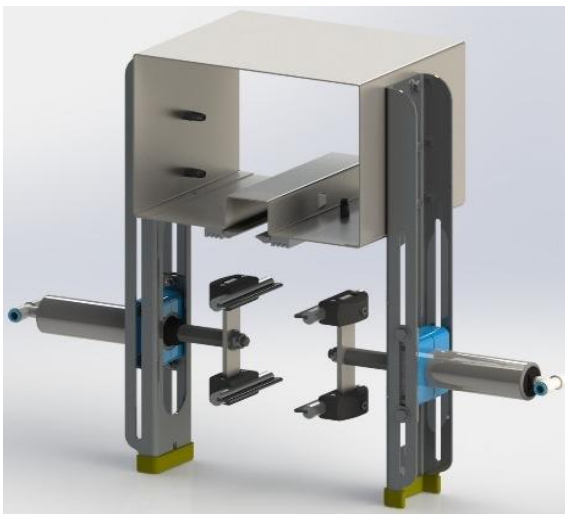




• LATERAL GUIDING

2. MULTI-POSITION LATERAL GUIDE : UBIC

ACCS Europe offers a new generation of side guides capable to reach 30 different positions with the same pneumatic cylinders. This item can be set up on different type of air conveyor. Contact us for more information.



• 2a- Complete set for straight and curve sections :

Ref.	Description
000118	UBIC STRAIGHT LATERAL GUIDE SET
000116	UBIC CURVE LATERAL GUIDE SET



• LATERAL GUIDING

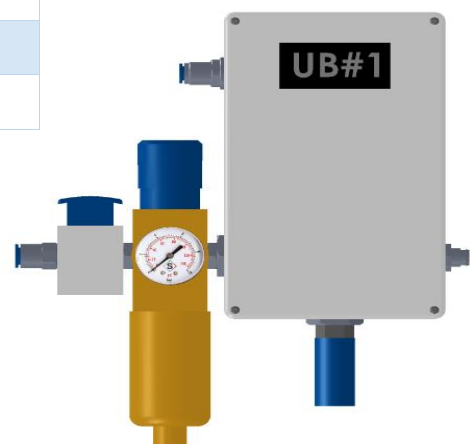
• 2b- Detailed parts :

No. article	Qty	Ref.	Description
1	1	TOLE000107	UBIC SUPPORT ACCS
2	1	DIVE000021	YELLOW INTERNAL PROTECTION
3	1	PNEU000037	UBIC CYLINDER Ø35-52 M10
4	1	DIVE000019	NECKLACE Ø40 PA
5	1	PNEU000022	T FITTING G1-8 Ø8
6	1	DIVE000020	SPIN-ON PLATE NECKLACE Ø40
7	1	TOLE000124	UBIC M10 SUPPORT PLATE
8	2	DIVE000008 DIVE000016	STRAIGHT : FIX NUT Ø14 CURVE : SLIDING NUT Ø14
9	2	BOUL000038	SCREW HC M8X20
10	1	BOUL000023	WASHER M10-M
11	2	BOUL000056	WASHER M6-Z ZN
12	2	BOUL000001	WASHER M6-L
13	1	BOUL000058	TORQUE NUT M10
14	2	BOUL000027	TORQUE NUT M6
15	2	BOUL000039	CHC SCREW M6X55 - 24
16	2	BOUL000032	HEX. SCREW M6X16

• 2c- Complete set of driving unit for UBIc guide : UBIc BOX.

Description	Ref.
UBIC BOX (SMC)	000107
UBIC BOX (METALWORK)	000108

REF: 000107 / 000108

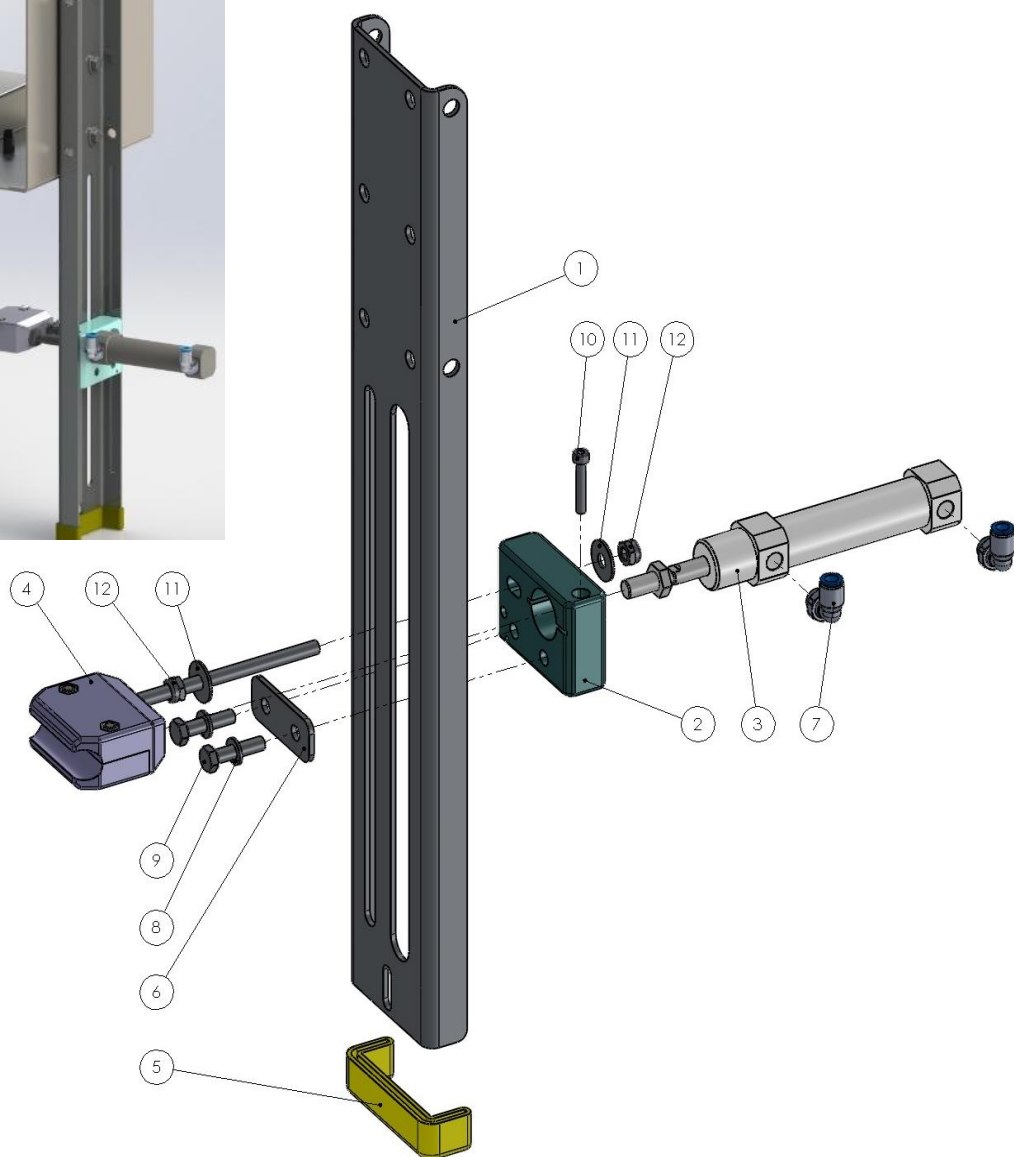
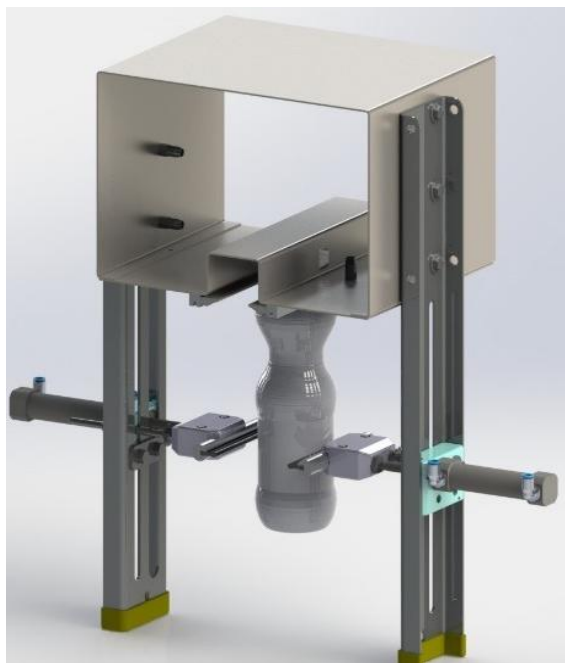




• LATERAL GUIDING

3. 2 POSITIONS LATERAL GUIDE : CLASSIC

ACCS Europe offers a classic side guides 2 positions. This item can be set up on different type of air conveyor. Contact us for more information.



• 3a- Complete set for straight and curve sections :

Ref.	Description
000189	CLASSIC STRAIGHT LATERAL GUIDE SET
000190	CLASSIC CURVE LATERAL GUIDE SET



• LATERAL GUIDING

• 3b- Detailed parts :

No. article	Qty	Ref.	Description
1	1	TOLE000132	GUIDE SUPPORT ACCS
2	1	DIVE000037	PLASTIC BLOCK CYLINDER SUPPORT
3	1	PNEU000010	CYLINDER Ø20- 40
4	1	DIVE000038 DIVE000039	STRAIGHT : FIX NUT Ø14 CURVE : SLIDING NUT Ø14
5	1	DIVE000021	YELLOW INTERNAL PROTECTION
6	1	TOLE000133	COUNTER PLATE CYLINDER GUIDING
7	2	PNEU000049	ELBOW FITTING G1-8 Ø6
8	2	BOUL000020	SPRING WASHER Ø6
9	2	BOUL000002	HEX. SCREW M6X25
10	1	BOUL000015	CHC SCEW M4X25
11	2	BOUL000001	WASHER M6-L
12	2	BOUL000027	TORQUE NUT M6

4. ACCESSORIES FOR LATERAL GUIDE

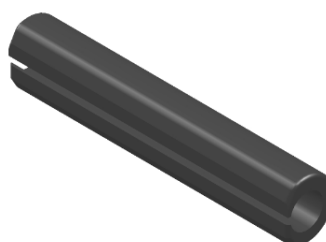
Used on UBIC X-Y, UBIC and CLASSIC versions.

Description	Ref.
JUNCTION STRAIGHT/STRAIGHT	DIVE000017
JUNCTION STRAIGHT/CURVE	DIVE000018
ALUMINUM GUIDE (3M)	ALUM000003
PLASTIC GUIDE (RL x 60M)	PLAS000013

REF: DIVE000018



REF: DIVE000017



REF: ALUM000003
REF: PLAS000013



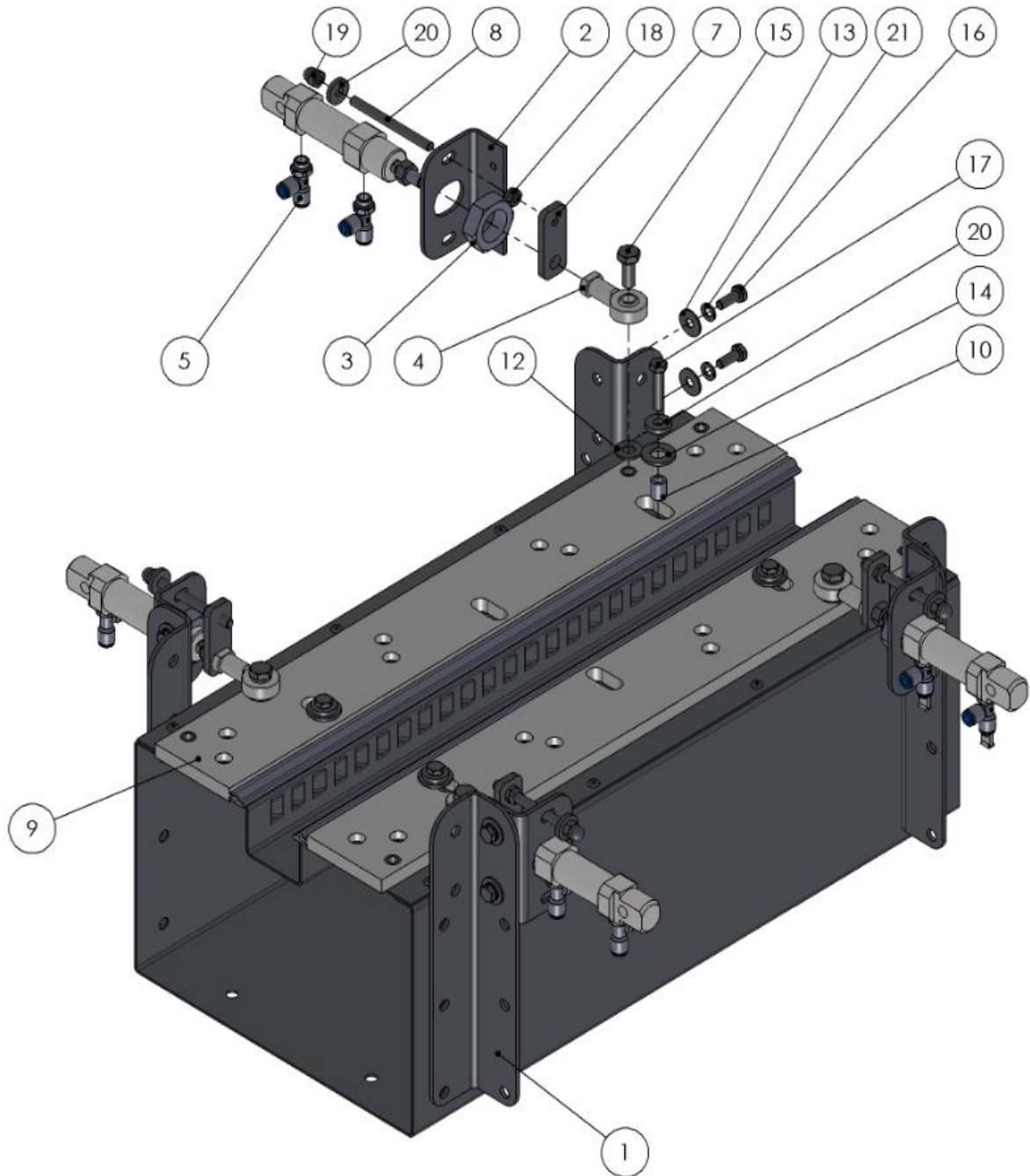


• DUMP GATES

1. DUMP GATES

ACCS Europe offers 2 types of dump gates, the automatic version for blower machine protection, and the manual version (before the filler) for line draining.

2. DETAILED DRAWING





• DUMP GATES

3. COMPLETE SET

Description	Ref.
MANUAL DUMP GATE SET	000038
AUTOMATIC DUMP GATE SET	000063

4. DETAIL OF PARTS

No. article	Qty	Ref.	Description
1	4	TOLE000061	DUMP GATE SIDE BRACKET
2	4	TOLE000062	CYLINDER CORNER FOR DUMP GATE
3	4	PNEU000001	CYLINDER 20-10
4	4	PNEU000004	SPHERICAL CHAP M8
5	8	PNEU000002	T FITTING G1-8 Ø6
6	2	PNEU000003	BLANKING PLUG FOR PUSH-IN CONNECTOR Ø6
7	4	TOLE000063	STOP FOR AUTOMATIC NECK GUIDE
8	4	BOUL000051	THREADED ROD M6x1000 INOX A2
9	2	PLAS000001	UNDER NECK GUIDE SUPPORT DUMP GATE
10	4	DIVE000006	SPACER Ø6.3 Ø10
11	4	BOUL000037	CYLINDRICAL INSERT M6X30
12	4	BOUL000022	WASHER M8-M
13	8	BOUL000001	WASHER M6-L
14	4	BOUL000023	WASHER M10-M
15	4	BOUL000019	HEX. SCREW M8X20
16	8	BOUL000032	HEX. SCREW M6X16
17	4	BOUL000069	HEX. SCREW M6X30
18	4	BOUL000027	TORQUE NUT M6
19	4	BOUL000068	DOMED CAP NUT M6
20	8	BOUL000061	PLAIN WASHER HEAVY Ø6
21	8	BOUL000020	SPRING WASHER Ø6



• SLUG SYSTEM

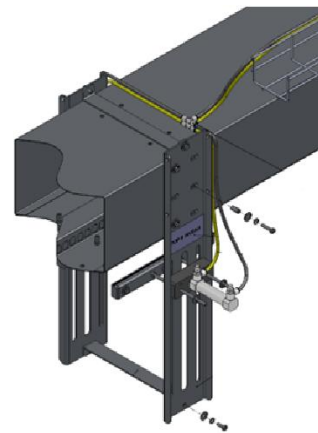
1. SLUG SYSTEM SET

ACCS Europe offers slug formation items to collect bottles per trains in order to have a safe bottle conveying. ACCS recommends 1 stopper per format.

2. COMPLETE SET

- 2a- Complete set with brackets and electro-valves :

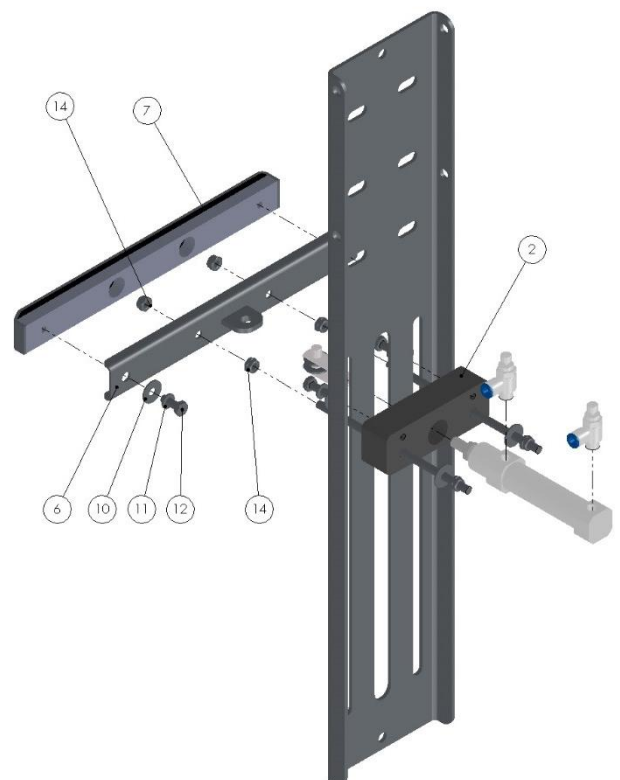
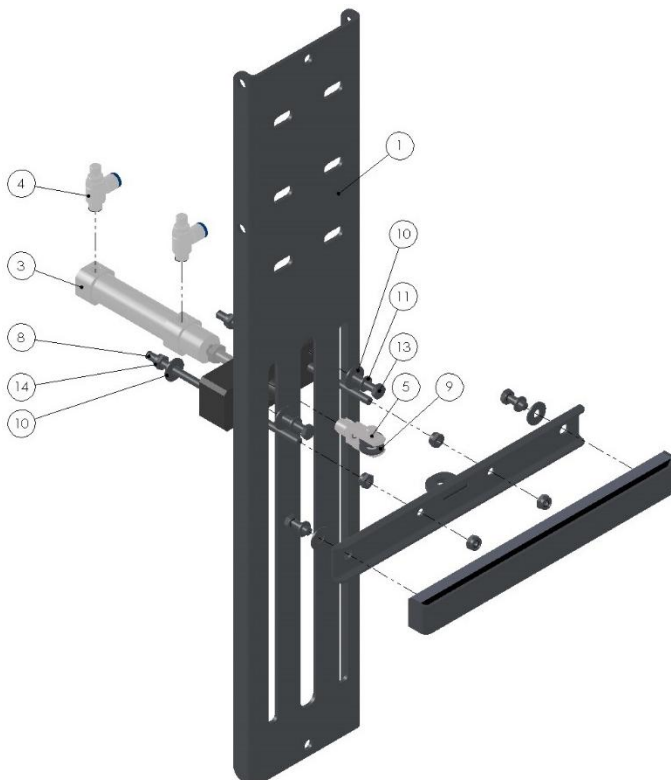
Description	Ref.
1 LEVEL SLUG SYSTEM SET	000173
2 LEVELS SLUG SYSTEM SET	000175



- 2b- Complete set without brackets and electro-valves :

Description	Ref.
1 LEVEL SLUG SYSTEM PRE-ASSEMBLY	000172
2 LEVELS SLUG SYSTEM PRE-ASSEMBLY	000174

3. DETAILED DRAWING





• SLUG SYSTEM

4. DETAIL OF PARTS

No. article	Qty	Ref.	Description
1	2	TOLE000122	SLUG SYSTEM SUPPORT
2	2	DIVE000041	SLUG SYSTEM CYLINDER SUPPORT
3	2	PNEU000010	CYLINDER Ø20 - 40
4	4	PNEU000014	FLOW CONTROLLER G1-8 Ø6
5	2	PNEU000011	CLEVIS M8 WITH LOCK
6	2	TOLE000075	BRAKE PADE SUPPORT
7	2	DIVE000007	BRAKE PAD
8	4	BOUL000051	THREADED ROD M6x1000 SS A2
9	4	BOUL000022	WASHER M8-M
10	12	BOUL000001	WASHER M6-L
11	8	BOUL000020	SPRING WASHER Ø6
12	4	BOUL000032	HEX. SCREW M6X16
13	4	BOUL000002	HEX. SCREW M6X25
14	12	BOUL000027	TORQUE NUT M6

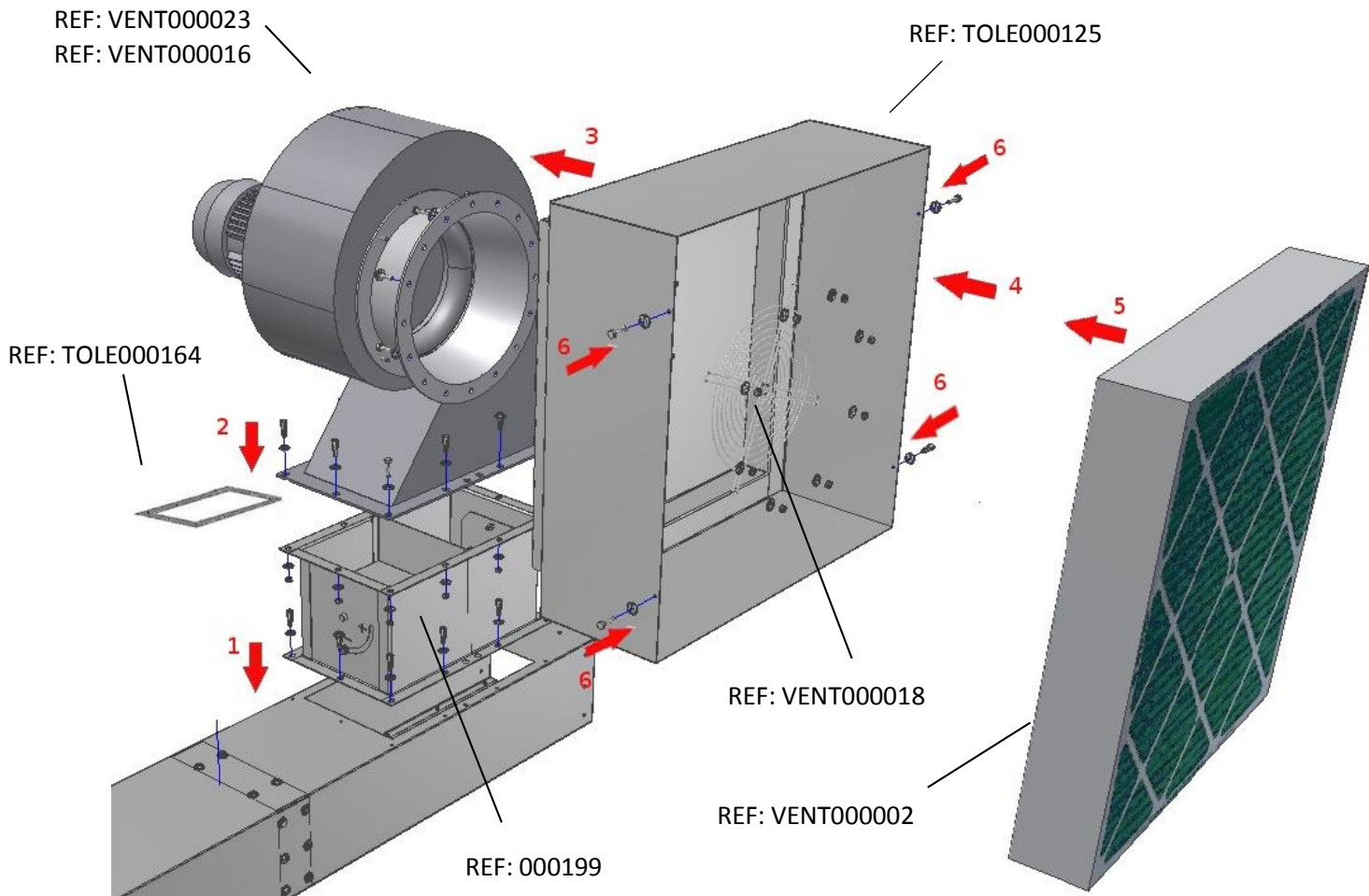


• VENTILATION AND FILTRATION

1. BLOWER ASSEMBLY AND G4 FILTER

Description	Ref.
2,2 KW BLOWER ASSEMBLY WITH G4 FLITER	000216
3 KW BLOWER ASSEMBLY WITH G4 FILTER	000218

2. DETAILS PLAN





• VENTILATION AND FILTRATION

3. DETAIL OF PARTS

Description	Ref.
BLOWER 3 KW	VENT000023
BLOWER 2,2 KW	VENT000016
FILTRATION DUCT G4	TOLE000125
SHEET ADJUSTEMENT	TOLE000164
DAMPER DUCT	000199
INTAKE GRID	VENT000018
G4 FILTER	VENT000002
WASHABLE G4 FILTER (GALVANISED STEEL)	VENT000012

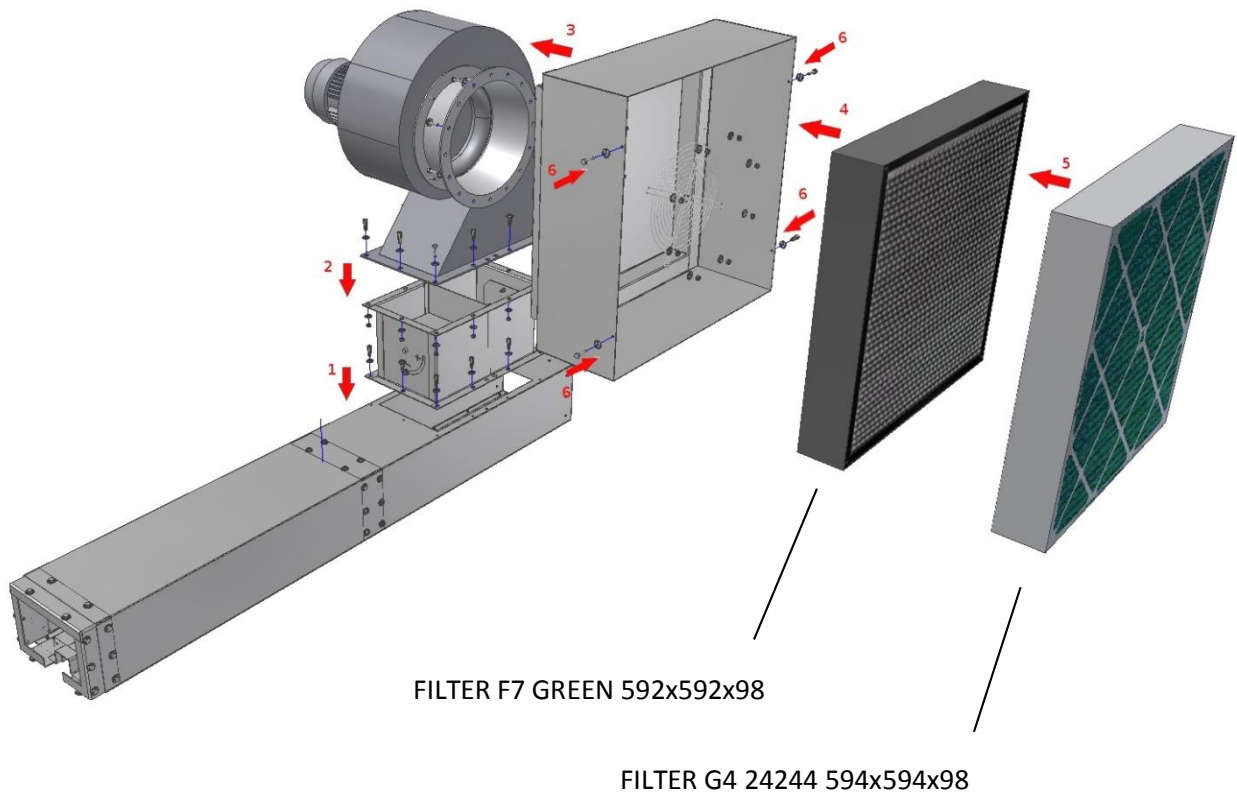


• VENTILATION AND FILTRATION

4. BLOWER ASSEMBLY AND G4 + F7 FILTER

Description	Ref.
2,2 KW BLOWER ASSEMBLY WITH G4 + F7 FILTER	000217

5. DETAILS PLAN





• VENTILATION AND FILTRATION

6. DETAIL OF PARTS

Description	Ref.
BLOWER 3 KW	VENT000023
BLOWER 2,2 KW	VENT000016
FILTRATION DUCT F7	TOLE000091
SHEET ADJUSTMENT	TOLE000164
DUMPER DUCT	000199
INTAKE GRID	VENT000018
G4 FILTER	VENT000002
F7 FILTER	VENT000003
WASHABLE G4 FILTER (GALVANISED STEEL)	VENT000012

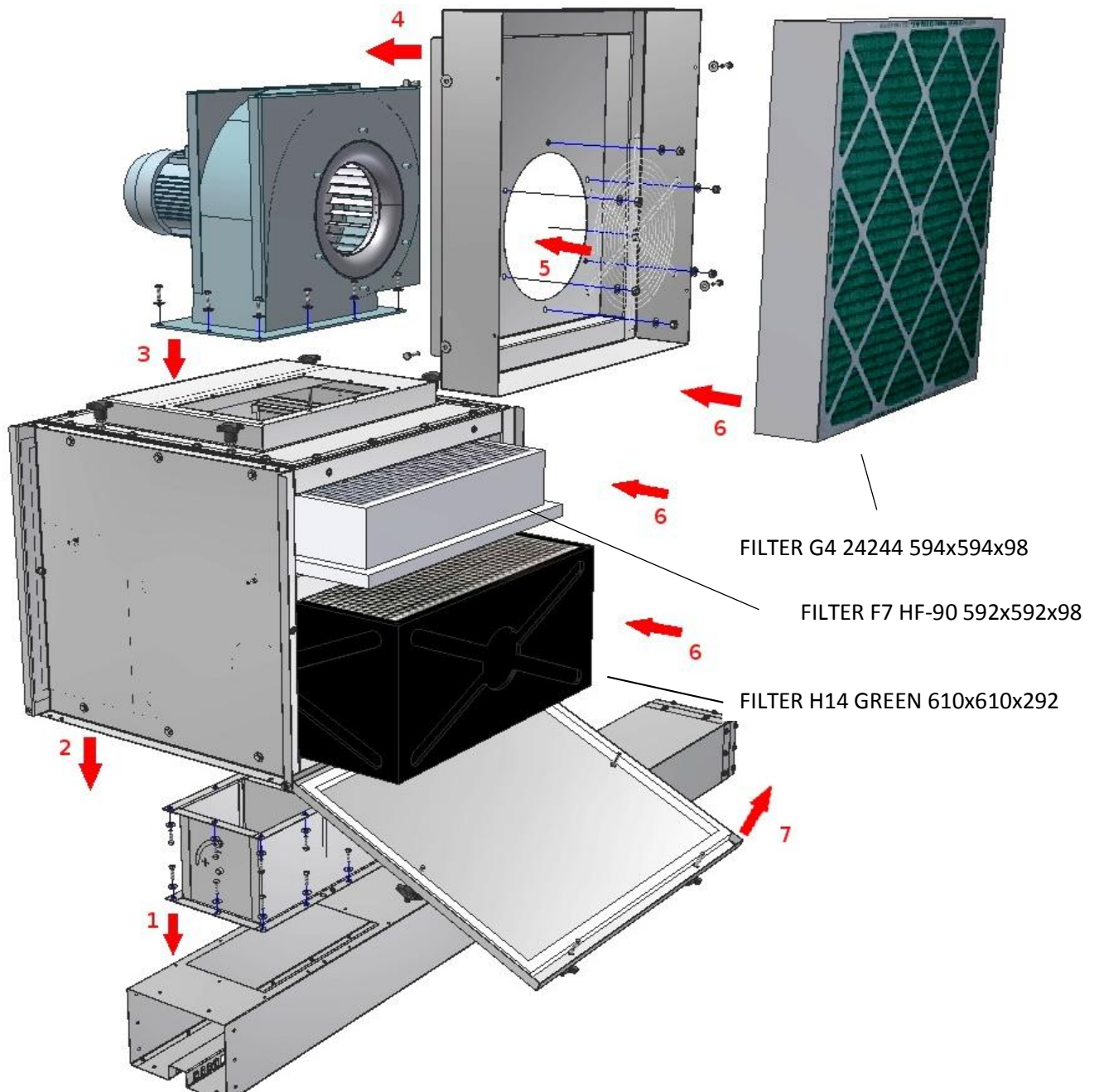


• VENTILATION AND FILTRATION

7. BLOWER ASSEMBLY AND G4 + F7 + H14 FILTER

Description	Ref.
2,2 KW BLOWER ASSEMBLY WITH G4 + F7 + H14 FILTER	000256

8. DETAILS PLAN





• VENTILATION AND FILTRATION

9. DETAIL OF PARTS

Description	Ref.
BLOWER 3 KW	VENT000023
BLOWER 2,2 KW	VENT000016
FILTRATION DUCT G4	TOLE000125
FILTRATION DUCT H14	TOLE000183
SHEET ADJUSTMENT	TOLE000164
DAMPER DUCT	000199
INTAKE GRID	VENT000018
G4 FILTER	VENT000002
F7 FILTER	VENT000003
H14 FILTER	VENT000014
WASHABLE G4 FILTER (GALVANISED STEEL)	VENT000012



• PNEUMATICS AND ELECTRICITIES

1. VARIOUS PNEUMATIC ACCESSORIES

REF: PNEU000036



PNEUMATIC ROLLS



REF: PNEU000044



REF: PNEU000042



REF: PNEU000043



2. DETAIL OF PNEUMATIC ACCESSORIES

Description	Ref.
REGULATOR FRL (REGULATOR LUBRIFICATOR FILTER)	PNEU000036
PNEUMATIC ROLLS:	
- Ø 6 (ROLL 100M) YELLOW	PNEU000005
- Ø 6 (ROLL 100M) BLACK	PNEU000006
- Ø 6 (ROLL 100M) ORANGE	PNEU000052
- Ø 6 (ROLL 100M) GREEN	PNEU000068
- Ø 6 (ROLL 100M) BLUE	PNEU000051
- Ø 6 (ROLL 100M) TRANSLUCENT	PNEU000069
- Ø 8 (ROLL 100M) BLUE	PNEU000016
- Ø 10 (ROLL 100M) BLUE	PNEU000029
MONOSTABLE SOLENOID VALVE	PNEU000044
BISTABLE SOLENOID VALVE	PNEU000042
SMC SOLENOID VALVE CONNECTOR	PNEU000043



• PNEUMATICS AND ELECTRICITIES

3. VARIOUS ELECTRIC ACCESSORIES

REF: ELEC00009

REF: ELEC00011

REF: 000129

REF: ELEC00002

REF: ELEC00010



REF: ELEC000116

REF: ELEC000164

REF: ELEC000166

REF: ELEC000168

REF: ELEC000170

REF: ELEC000163

REF: ELEC000165

REF: ELEC000167

REF: ELEC000169

REF: ELEC000171

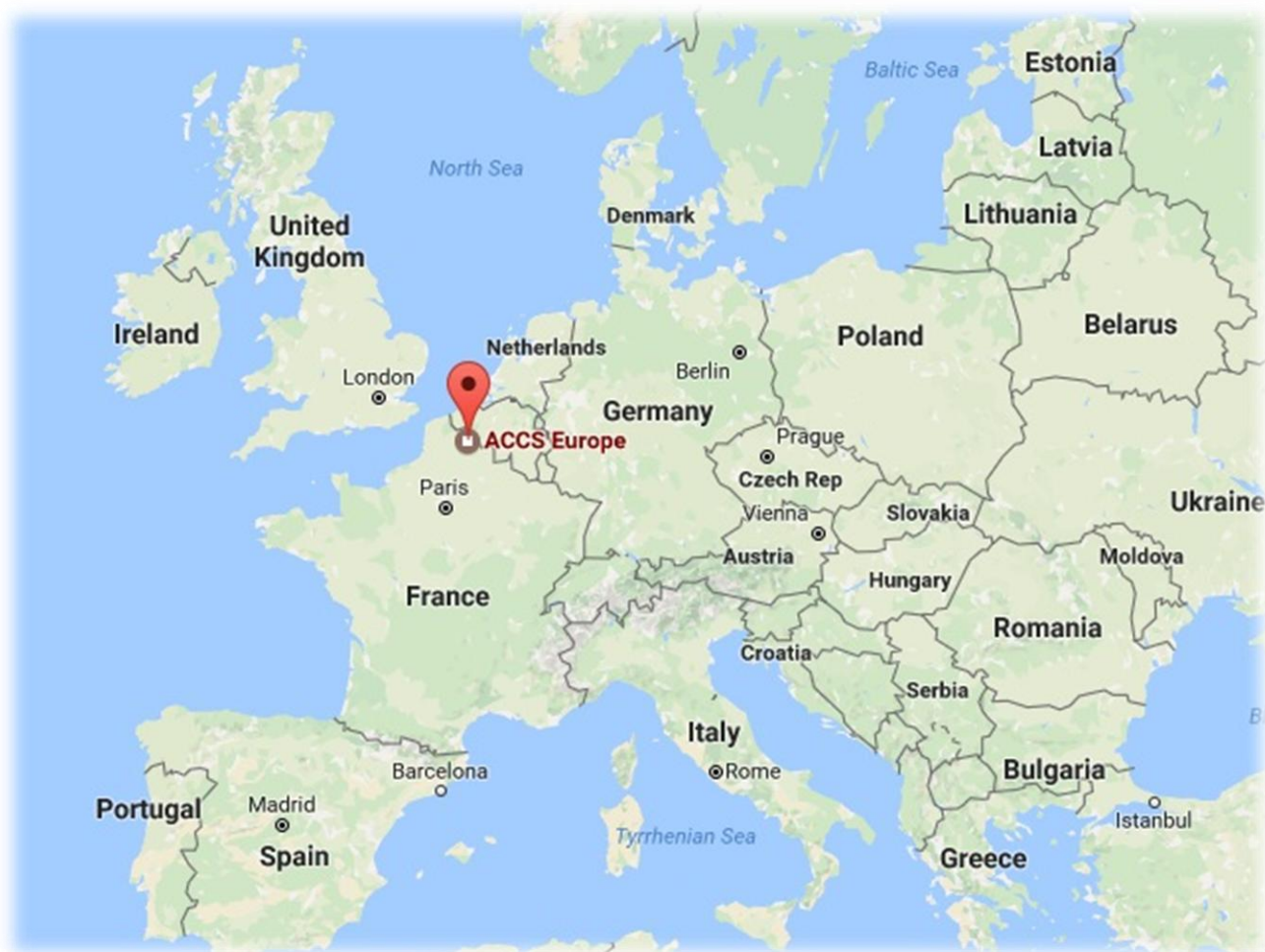




• PNEUMATICS AND ELECTRICITIES

4. DETAIL OF ELECTRIC ACCESSORIES

Description	Ref.
BAUMER ULTRASOUND TRANSMITTER	ELEC000009
BAUMER ULTRASOUND RECEIVER	ELEC000010
ELBOW CONNECTOR FOR BAUMER WITH CABLE 10M	ELEC000011
PRESSURE GAUGE	000129
SWITCH DISCONNECTOR	ELEC000002
VARIATOR :	
- FC 302 (2,2 KW) / (3 KW)	ELEC000116 / ELEC000163
- FCD 302 (2,2 KW) / (3 KW)	ELEC000164 / ELEC000165
- FC 102 (2,2 KW) / (3 KW)	ELEC000166 / ELEC000167
- FC 51 (2,2 KW) / (3 KW)	ELEC000168 / ELEC000169
- FC 2008 (2,2 KW) / (3 KW)	ELEC000170 / ELEC000171



ACCES

EUROPE

ACCES EUROPE
23 ZAC DE L'EUROPE
59310 - ORCHIES
FRANCE

TEL : +33(0)9.81.69.94.43
FAX : +33(0)3.20.52.94.43
E-MAIL : contact@accseurope.com