

Neck guide change over

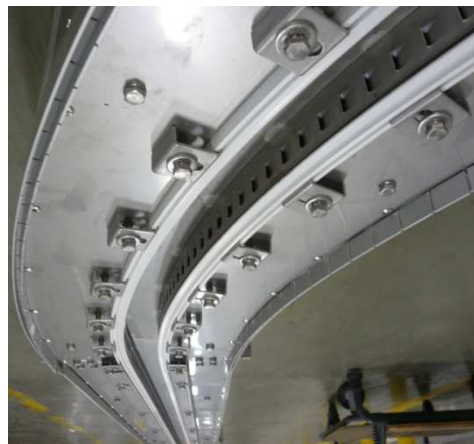
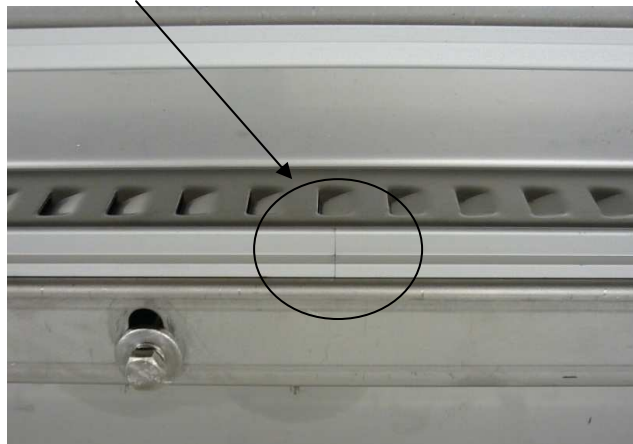
STEP 1 : Start by the dismounting of the existing neck guide (keep the bolts and clamps if needed)

STEP 2 : Make a cleaning of the blowing channel (if needed)

STEP 3 : Set up the aluminum rail and the clamps as here under. The Aluminum rail should be centered / blowing channel. We advise you to start with the 90° curves. Use the centering tool to control the rail positioning / Blowing channel.



No gap between the rails !



STEP 4 : Take **2 rolls** of neck guide and open smoothly their extremities before setting.



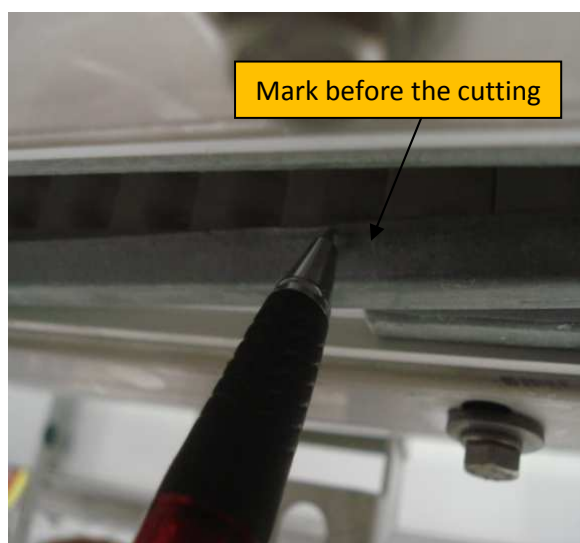
STEP 5 : Set the 2 neck guide on both side and use the setting tool for this. Push strongly in order to “clip” the guide on the aluminum rail. Use the cutting tool for the extra length.



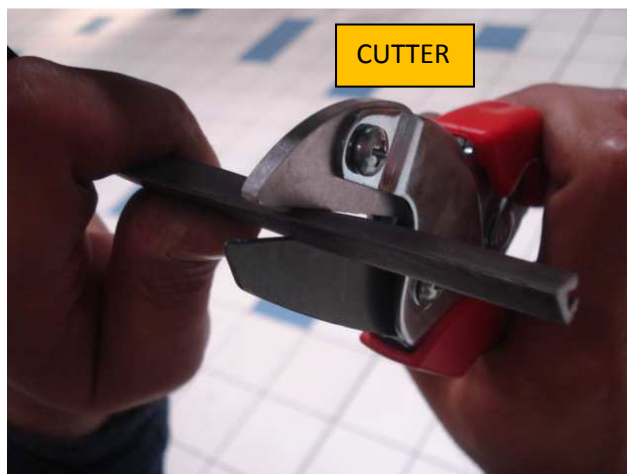
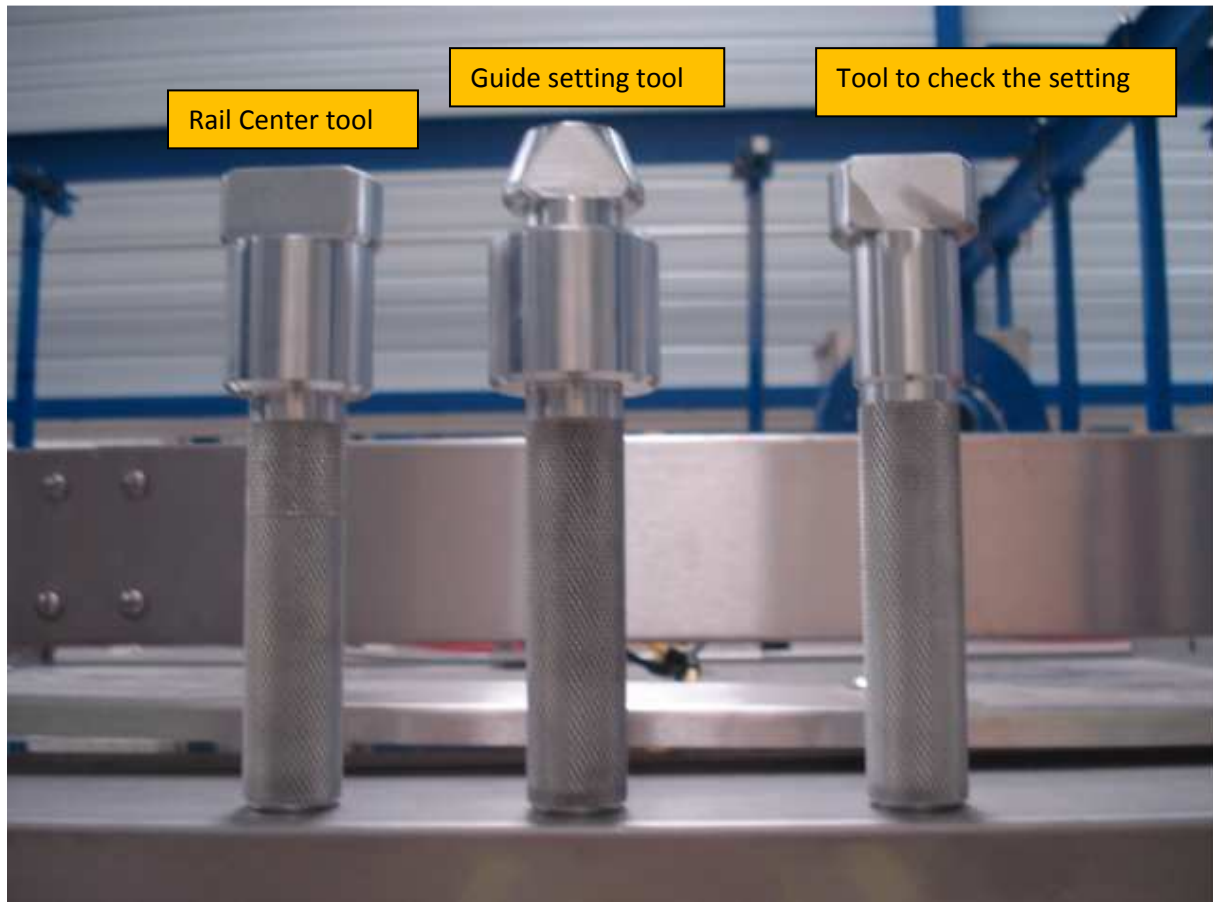
Example of extra length :



Setting tool : turn it at 90° to enter the tool between the guide, turn it at 90° and push strongly !!!



TOOLS TO HAVE :



ACCS CHANNEL: <https://www.youtube.com/user/ACCSGROUP/videos>

➔ Select under neck guide by ACCS